

16000KW Multi-purpose Ocean-going Tug -- De Shen



Name of vessel : DE SHEN
Date of Delivery : 2014.4
Nationality : China
Port of Registry : Shanghai, China
Classification : China Classification Society, offshore tug/supply ship, Fire fighting ship 1, Water Spraying, In-Water Survey, PSPC. Ice class B2, AUT-0, DP-2.

Kind of Ship : Multi-purpose Ocean-going TUG
Shipbuilder : WUCHANG SHIPYARD, CHINA
MMSI No. : CN20122855353
IMO No : 9693446

DIMENSIONS

Length BP : 80.00 m
Principal Dimensions : LOA (m) / B (m) / D (m) : 90.0 m / 20.0m / 8.8 m
Draft (Fore/Aft) : 7.2 m(full), 5.6m(light)
Gross Tonnage : 4545 tons
Net Tonnage : 1363 tons
Power of Main Engines : 4000 KW x 4 (total: 16000 kw)
Endurance : 21500 N miles (55 days)
Bollard Pull : 261.5 MT

Particulars believed to be correct but not guaranteed.

Speed : 17.0 knots (Max.), 14.7 knots (Economical)
Sailing area : World wide

TANK CAPACITY

Oil : 3730 m³
Lube Oil : 110 m³
Water : 2835 m³
Liquid Mud : 542 m³

LIQUID TRANSFER RATES

Water : pressure:8 bar capacity:100 m3/hr
Oil : pressure:10 bar capacity:108 m3/hr

MACHINERY

Main Engines : Wartsila 8L32, 4000 kw x 4 sets, 750 r/min
Generators : Type: DAIHATSU 6DE-18, 3 sets, Rated capacity:400kw (500 KVA) , rpm: 750r/min, Phases & Freq.:400v, 3, 50 Hz
Shaft Generators : Type: AVK DSG86 LI-4, 2 sets Rated capacity:1990.4 kW (2488 KVA), Phase & Freq.:400v, 3, 50Hz
Emergency Generator : Type: CCFJ 90YDM, 90kw, 1500r/min Rated capacity: 112.5 KVA , Phase.& Freq.: 400V,3, 50Hz
Emergency Fire pump : Maker & Type:JiangShu ZhengHua, PUMP, 80CLZ-5.5 Capacity & Pressure: 36 m3/h ; 55m, 2950rpm,18.5kw.
Main Engine Air Compressor : Type:HD45.1.2.00.01.10.23 1500 rpm, 30 bar,2 sets, Maker: NK GERMANY, Capacity: 75 m3 /hr, Delivery pressure: 3 Mpa
Propellers : Model:Wartsila Lips 4E1190, Propeller Dia.& rev.: 4300 mm, 141.3 rpm, MCR:8000kw
Rudders : 230WDF240-01/02, 2 × 10.2 m2, WuXi DongZhou
Steering gear : Rolls Royce SR722FCP, 2 sets
Bow thruster : 2 set ,Maker & Type: Brunvoll FU-74-LTC-2000-1010kW,& FU-63-LTC-1750-830kW, Output & Thrust: 1010kw, 16T & 830kw,12T.
Stern thruster : 1 set ,Maker & Type: Brunvoll FU-63-LTC-1750-830kW, Output & Thrust: 830kw, 12T
DP2 &J-stick : Navis NavDP 4000, NAVIS ENGINEERING OY.

TOWING/ANCHOR HANDLING EQUIPMENTS

- Towing/Anchor handling winch : Type: ZICOM DCK001214AHTW-400, capacity: 400 ton, Rated speed: 5-36m/min, Drum: 2 pcs , Maker:ZICOM PRTVATE LIMITED SINGAPORE
- Tow wire : ① Dia. 84 mm x 1700 metres,
② Dia. 84 mm x 1700 metres
③ Dia. 84 mm x 1700 metres (on spare storage drum)
- Shark Jaw : Type: ZICOM DCK001214HSJ-570, Capacity: 570tons
Maker: ZICOM PRTVATE LIMITED SINGAPORE
- Towing Pins : Type: ZICOM DCK001214HTP-300, Capacity: 300 tons, Maker: ZICOM PRTVATE LIMITED SINGAPORE
- Open stern roller : 2400mm x5400mm, 6500kn

DECK EQUIPMENTS

- Anchor : Type: Spek 3780 Kg x3,(one for spare)
- Anchor Chain : Dia.: 50mm, Grade: AM3, Length: 27.5m x 15 shackles x 2,
- Windlass : Type: ZICOM DCK001214HWWL-50-U3-20-L/R, Winding Load: 202 KN
Winding speed: 0-12 m/min
- Tugger winch : 2 sets, Type: ZICOM DCK001214HWW-25-L/R, Winding load: 20/25 tons, Winding speed: 20 m/min
- Capstan : 2 sets, Type: ZICOM DCK001214HWW-25-L/R, Winding load: 10 tons
Winding speed: 20 m/min
- Deck Crane : Type: YQZ1600-10t-8m(5t-14m); HTFTC2-10, SWL: 8m-10T, 8-14m-5T

NAVIGATION/COMMUNICATION EQUIPMENTS

- Gyro Compass : Type: STANDARD 22
- Auto Pilot : Type: ANSCHUETZ Digital Autopilot NP2015
- Echo Sounder : Type: JFE-380 , Maker: JRC
- Radar : Type: FURUNO FAR-2827-D with ARPA, Type: FURUNO FAR-2837S-D with ARPA
- Speed Log : Type: FURUNO DS-80
- Weather Facsimile Receiver : Type: JRC JAX-9B
- NAVTEX receiver : Type: JRC NCR-333

DGPS	:	Type: JRC-JLR-7800, 2 sets
ECDIS	:	Type: ANSCHUETZ, 950-009.NG/SA.
AIS	:	Type: FURUNO FA-150
SSAS	:	Maker & Type: FURUNO, FELCOM 15,
S-VDR	:	Maker & Type: FURUNO, VR-3000
Satcom-F	:	Maker & Type: FURUNO, FELCOM - 500
Satcom-C	:	Maker & Type: FURUNO FELCOM15
SART	:	Maker & Type: MCMURDO 9GHz SART / S4 x 2sets
MF/HF Transceiver with DSC	:	Maker & Type: FURUNO FS-5075
VHF Radio with DSC	:	Maker & Type: FURUNO FM-8800S
406MHz S-EPIRB	:	Maker & Type: MCMURDO, E5

LIFE-SAVING & FIRE-FIGHTING EQUIPMENTS

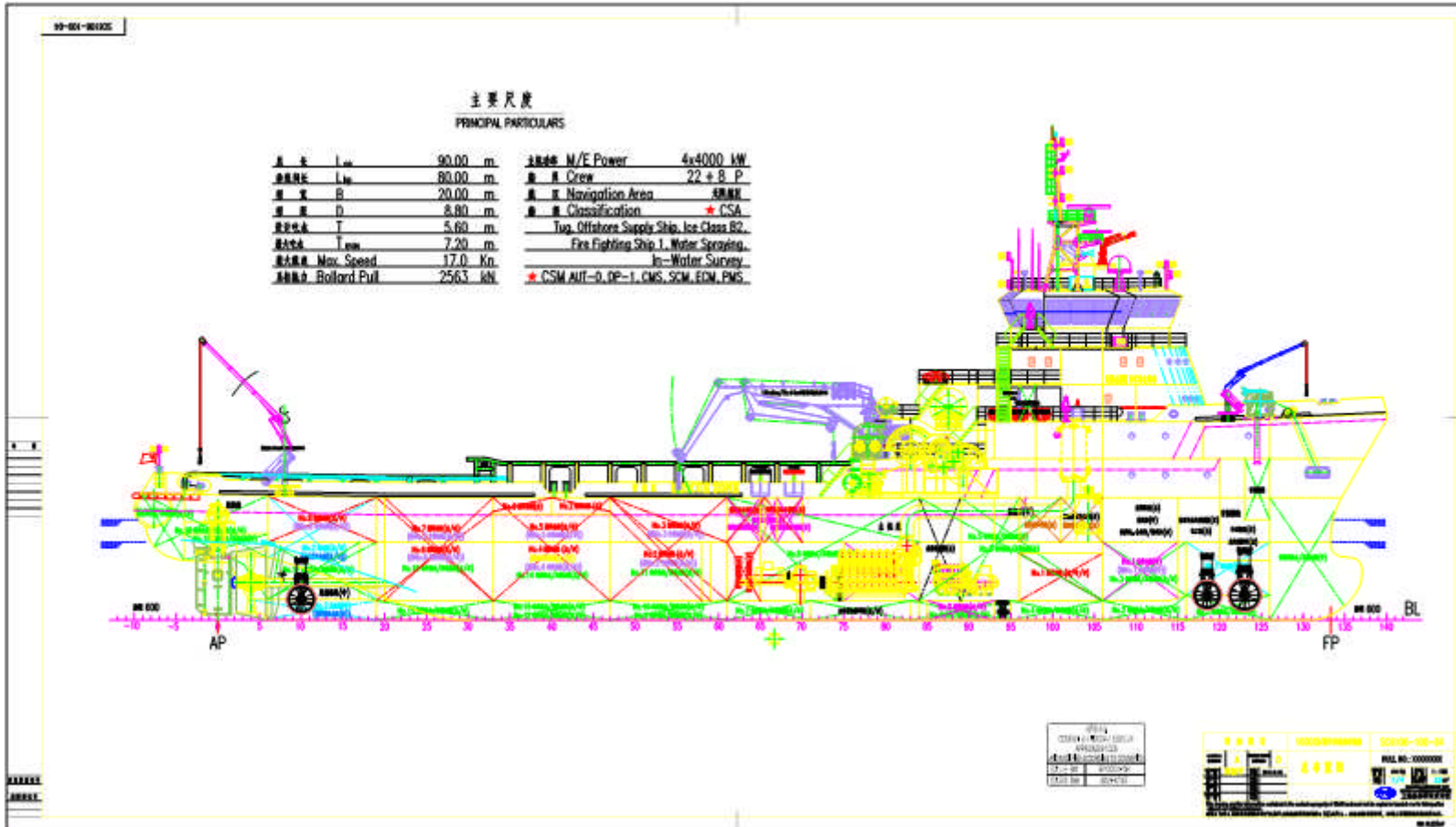
Rescue boat	:	ZG27/4.3, 6 p x 1 set, high speed(24kts).
Life raft	:	20 p x 6 sets
Rubber work-boat	:	Capacity 7 p, 4.23m x 1.9m, Engine YAMAHA 50 HP
Fire Pump	:	Type: SSCXB300-250, Capacity: 1800m ³ /h, 2 sets, Power: 986 kw (run by M/E), RPM: 1800
Yokohama Fender	:	Dia x Length: 1.5m x 2.5m, 2pcs

DECK CAPACITIES

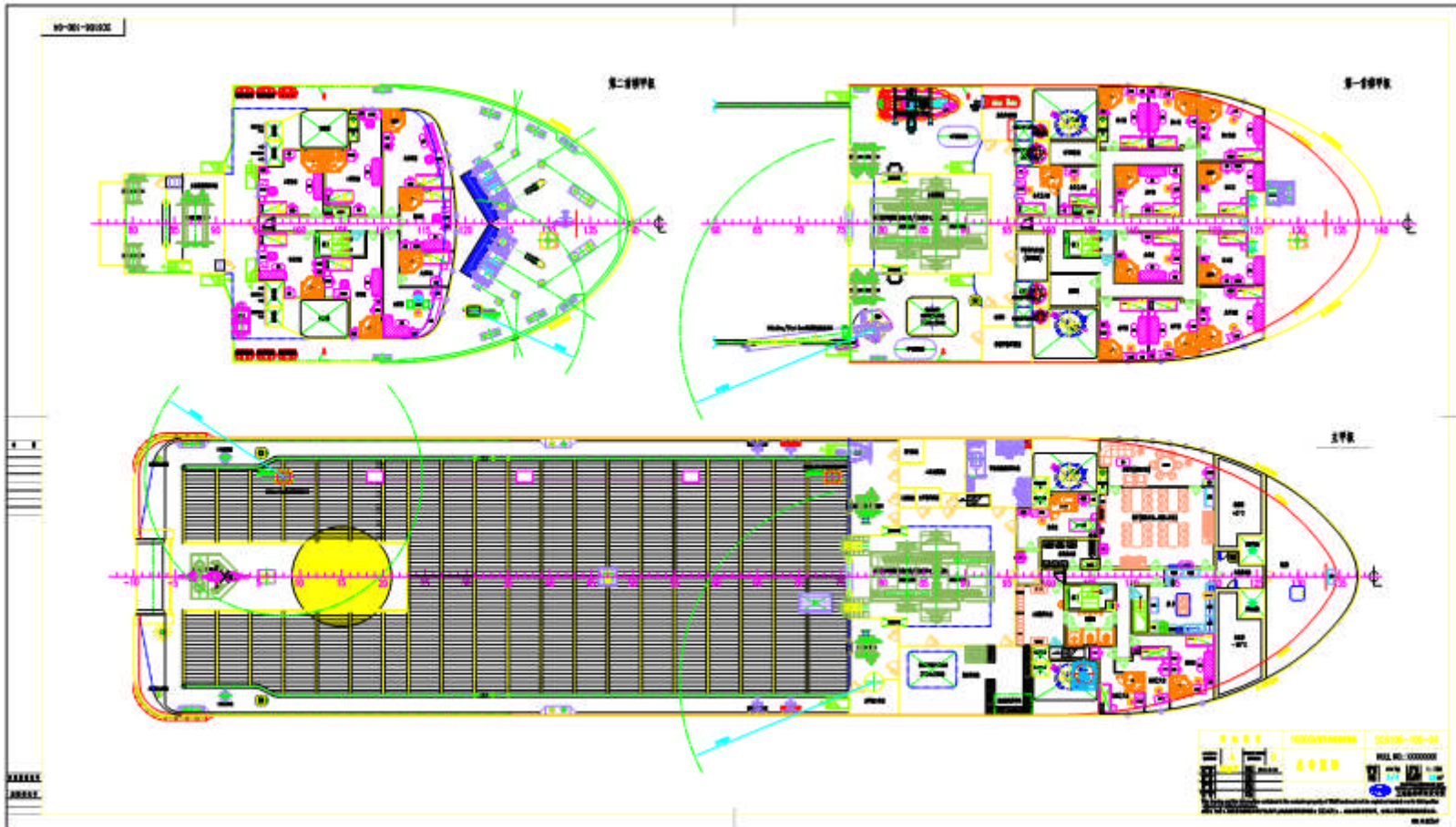
Clear deck space: 800 M²,
Deck Strength: 5 tons/m², Crash Rail: 1.6/2.6 metres height
Deck Cargo capacity: 1000 Mtons

ACCOMMODATION

Quarters: 1 berth x 22 + 2 berth x 4 , total 30 berths
Hospital: 1



Particulars believed to be correct but not guaranteed.



Particulars believed to be correct but not guaranteed.