

# “Chuang Li”

DP3 4,500MT lifting capacity Self-propelled Derrick pipelay vessel



## 1. 4500T full revolving crane

Crane	Main hoist	Auxiliary hoist	Whip hoist
Load	4,500T at fixed condition at jib aft 3,500T at full revolving condition	800T at fixed or at full revolving	200T at fixed or at full revolving
Working radius	4,500T 30m-40m (fixed) 3,500T 30m-40m (revolving)	800T 33m-102m	200T 42m-116m
Lifting Height Above deck (Lifting speed)	95m@R40m 0-4m/min 4500T 0-4m/min 3,500T 0-8m/min No Load	110m@R33-102m 0-12m/min 800T 0-24m/min No Load	125m@42-116m 0-20m/min 0-40m/min No Load

## 2. Class of Ship (ABS/CCS)

★CSA Floating Crane, Lifting appliance, Salvage Ship, Pipe Layer, SPS, PSPC (B), Ice Class B, Loading Computer (S,I,D), Helicopter Facilities, In-Water Survey,  
 ★CSM AUT-0, DP-3, Electrical Propulsion System, FTP, BWMP,  
 COMF (NOISE) 3, COMF (VIB) 3, BWMS

## 3. Principal Particulars

Length	198.8m
Breadth	46.00m

Depth	12.80m
Draught	8.5m
Navigation draft	7.5m
Complement	399 persons
jib fixed aft	4,500t X 40m
Rated Speed	Max. 15 KTS

#### 4 DP System

DP3 DGPSX2; MRUX3; HiPAPX2; RadiusX1; Taut WireX2; UPSX 2

#### 5. Machinery of deck

1) Positioning Winch		10 sets	
Brake load		3,000kN	
Wire Diameter		φ76 mm	
Storage Capacity		3,000 m	
Mooring Depth		100 m	
2) Windlass		2 sets	
Weight of anchor		12.6T	
3) Deck crane		40t@35m	
Cargo crane		10T@15m	
4) Free deck Area	4500 m <sup>2</sup>	Deck Load	10t / m2

#### 6. Generator

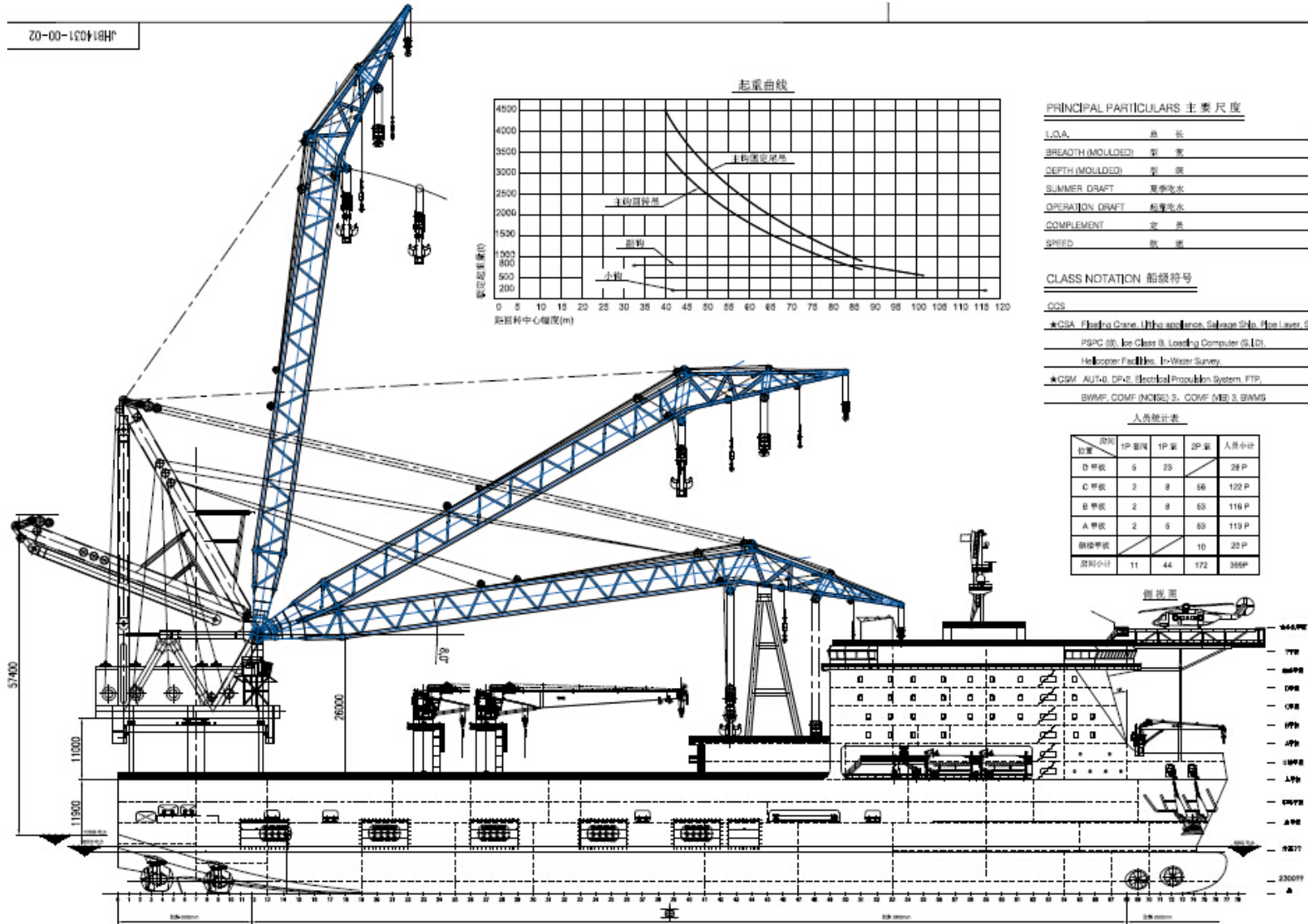
Total Generator Power	41,650KW
Main generator	1.1KV, 4,750KW 60HZ 8sets
Diesel engine	4,850 KW X 720R.P.M./ 8 sets
Aux. generator	1,500 KW
Aux. diesel engine	1,600 KW
Emergent generator	1000 KW
Emergent Diesel engine	1250 KW

#### 7. Propelling machinery

Total Thrust Power	28,600 KW
Azimuth Propeller	4,000 kW X 2 sets + 4,500 kW X 2 sets
Retractable Propeller	3,300 kW X 2 sets
Tunnel Propeller	2,500 kW X 2

#### 8. Pipe-laying system

S- lay up to 2,000m; Tensioner: 600T; A&R winch: 600T; Pipe dimension: 6"--60"



LIFTING CURVE

